



## Help for your child

### Is your child under the age of 7?

### Do you have concerns about your child's development:

- how they play and move around
- how they do things to take care of themselves
- how they socialise with other children, or
- how they communicate their needs and wants?

If so, you can be connected with an NDIS Early Childhood Partner to discuss your concerns.

Your NDIS Early Childhood Partner will:

- help you understand your child's support needs
- provide information about the support options available for your child
- help you learn about the NDIS Early Childhood Early Intervention Approach

## Connecting with an NDIS Early Childhood Partner

You can contact an NDIS Early Childhood Partner by calling them directly or downloading a referral form from the website listed below. Your doctor or other health professional can help you with this referral form if needed.

### When you first meet with an NDIS Early Childhood Partner they will:

- Work with you to understand your child's needs
- Look at other information and reports you might have
- Offer some helpful information and make some recommendations
- Discuss a variety of support options
- Determine the next steps



## Supporting you and your Child

Providing quality early childhood intervention early in your child's life is important to set up how they'll learn and develop in the future. Support provided early will give your child the best chance of achieving their potential.

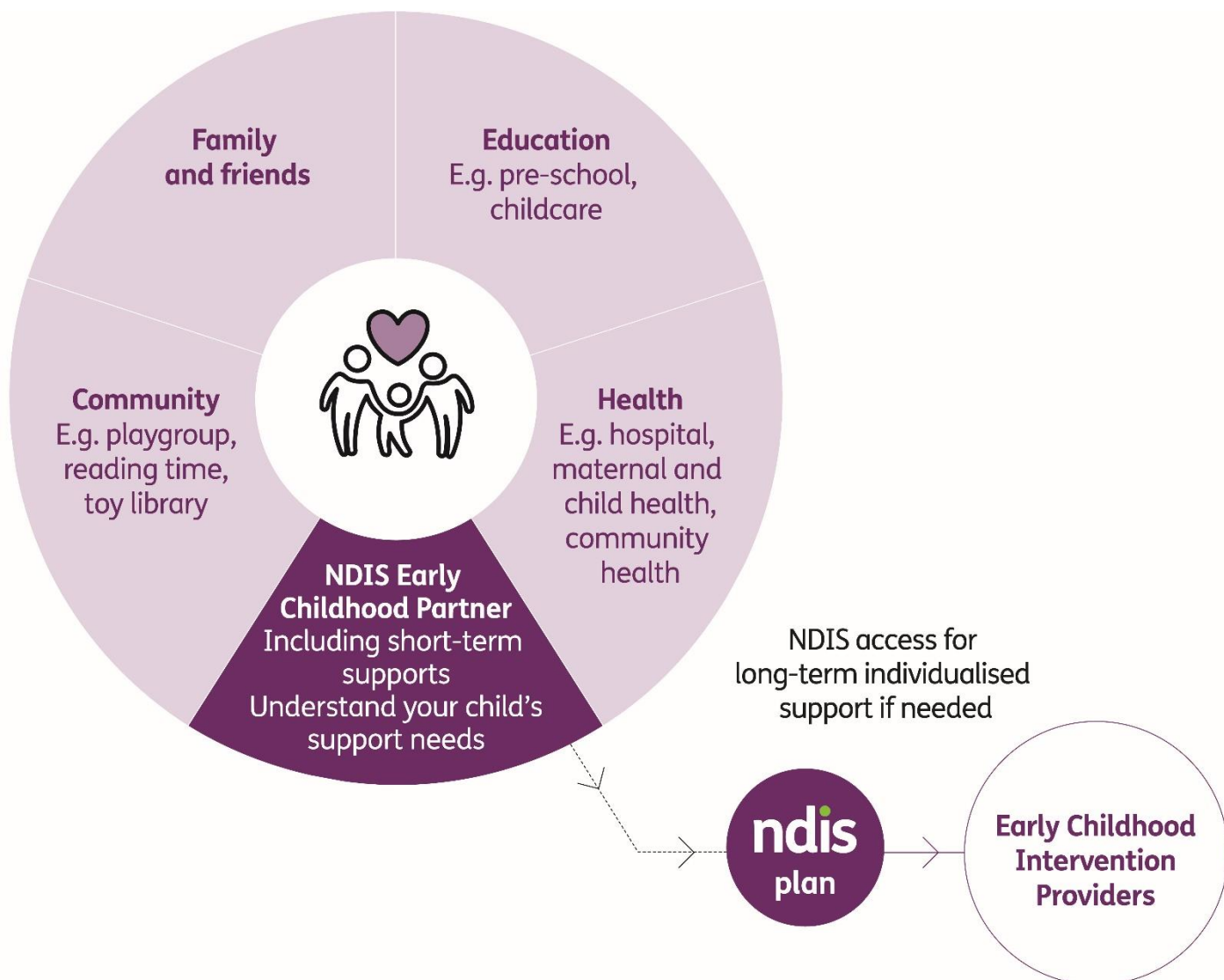


FIGURE 1 - INFOGRAPHIC - THE ECEI APPROACH

The NDIS is a national scheme that helps people with disability, including children with developmental delay and disability, get the supports and services they need.

Early Childhood Partners deliver the Early Childhood Early Intervention Approach on behalf of the National Disability Insurance Agency (NDIA).

Your NDIS Early Childhood Partner will give you information and link you to supports that are best for your child and family.

### For more information contact your NDIS Early Childhood Partner

EC Partner contact details (Lifestart Telephone: 1800 953 390 Website: [www.lifestart.org.au](http://www.lifestart.org.au)):

**NDIS:** 1800 800 110

For people who need help with English **TIS National:** 131 450

For people who are deaf or hard of hearing **TTY:** 1800 555 677 **Speak and Listen:** 1800 555 727

**Internet relay:** National Relay Service [www.relayservice.gov.au](http://www.relayservice.gov.au)