

Breast Screening Quality Improvement

Overview

This project aims to increase breast screening rates in your practice by providing tailored support. The focus is on cleansing patient data, encouraging screening and setting up efficient reminder systems.

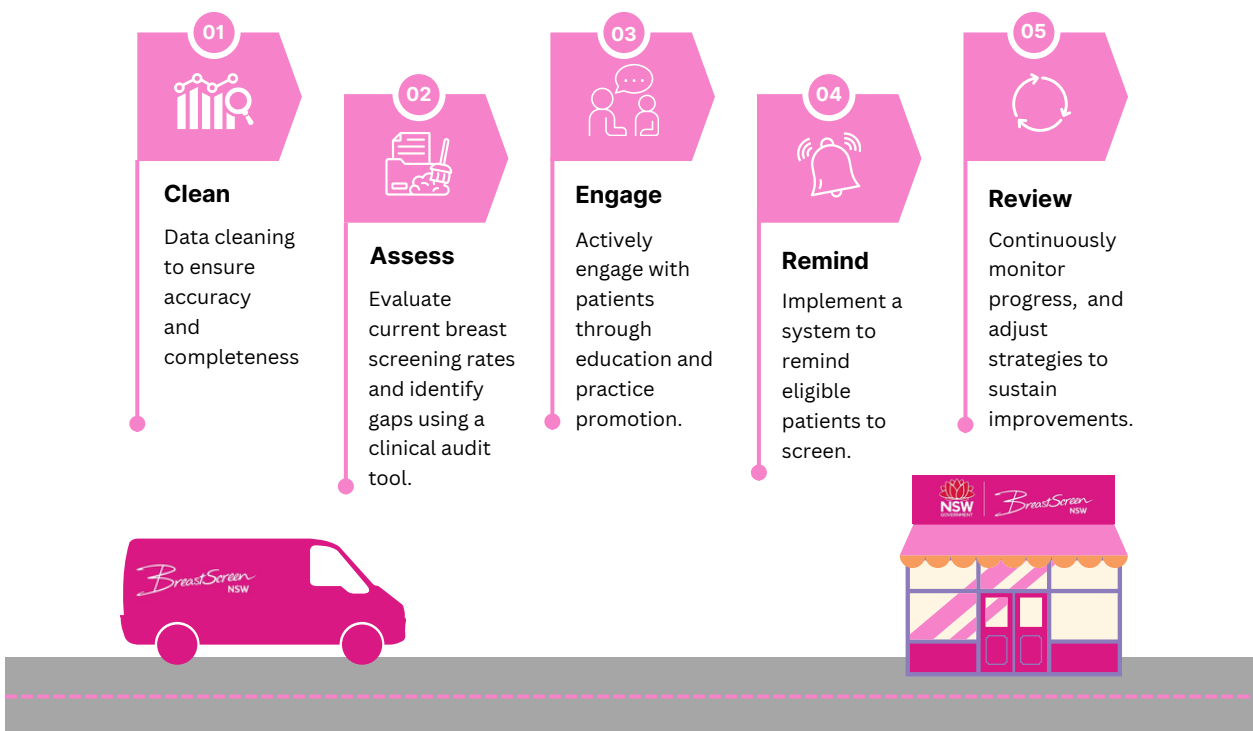
Aim

The project aims to:

- Improve breast screen data at a practice level, and
- Increase breast screening participation.

Key Outcomes

- Improved patient data quality.
- Increased screening rates.
- Streamlined follow-up processes.
- Participants will receive a certificate reflecting CPD hours.



Why this matters

Breast cancer is the **most common cancer affecting females** in NSW, yet only 50% of eligible women in the CESPHN region are up to date with screening.

Women are more likely to participate in breast screening when encouraged by their GP.

Accurate data ensures that eligible patients are identified and recalled efficiently, reducing the risk of missed screenings.

Get involved

For more information or to participate, please contact the Cancer Prevention and Control Project Officer at cancerscreening@cesphn.com.au.