

The ENABLE Study: A NHMRC Partnership Project

*'Improving patient outcomes and reducing the hidden burden of chronic wounds:
a digitally enabled Wound Model of Care'*

The ENABLE study - What is it?

ENABLE is a clinical trial designed to connect patients and clinicians, ensuring that patients receive timely, evidence-based wound care. It will also enhance continuity of care across different health services, fostering improved teamwork among healthcare providers.

The trial includes an initial period of standard care, during which baseline data on patients' wounds and outcomes are collected (including data from medical records), along with patient and clinician interviews and surveys over a 5-month period. This is followed by the intervention phase, where the new model of care is implemented (6 months).

What is the ENABLE Model of Care?

The model of care involves access and use of two key components:

- A hybrid (virtual and face-to-face) wound specialist service, offering expert care and advice on how to manage chronic/complex wounds and will engage in shared care with the primary practitioner and the patient.
- An artificial intelligence digital wound platform (app and web portal) that allows you to capture the wound image, analysis the wound for dimensions, document the wound characteristics and treatment and track wound healing over time. Wound reports can be generated and uploaded into the eMR.

Who does it involve?

This study will involve patients at your practice/facility with chronic or complex wounds (wounds that have not healed within 30 days) and clinicians who provide wound care at your practice/facility. All participants must provide their written informed consent to participate in the study.

Will there be support provided?

A research officer will be employed by the study to work closely with your practice/facility to recruit patients, collect data, and offer support on how to access the virtual wound care service and troubleshoot use of the digital wound platform.

When is the study occurring?

The study start date is dependent on receiving the necessary approvals and agreements, but we aim to start the study in early to mid-2025.

Sites will begin one month after another and not concurrently. Therefore, there is a possibility some sites will start later in the year.

The total trial period involving standard care, and the intervention will be 12 months.

Why you should participate

Your practice/facility will be the first in Australia to trial a model of care that will strengthen and enhance your capacity to care for vulnerable patients and prioritise wound treatment and provide continuous monitoring and management. The outcomes and findings of ENABLE will provide us with a blueprint and significant learnings and experience for expansion of the ENABLE model of care to other practices/facilities and connect patients and clinicians in the community to wound specialists, via a digital wound application and virtual service to complement existing face-to-face care. In the ENABLE study, patients will have prompt access to evidence-based wound care and clinicians at the participating facilities/services will have access to wound expert advice, thereby reducing the burden on patients and clinicians alike and improve health outcomes.

Want to find out more?

You can contact Dr Michelle Barakat-Johnson (Executive Research and Clinical Lead, Skin Integrity and Nurse Manager, Sydney Local Health District) who is the Chief Investigator of the study on 0425 248 946 or via michelle.barakatjohnson@health.nsw.gov.au.

Our Partners

HEALTHY phn
NORTH COAST
CENTRAL AND
EASTERN SYDNEY
An Australian Government Initiative


WoundsAustralia
Healing Wounds Together



Murrumbidgee
Local Health District



South Western Sydney
Local Health District



Western NSW
Local Health District



WoundRescue
Consulting | Educating | Quality Reviews



eHealth NSW



**AGENCY FOR
CLINICAL
INNOVATION**

The ENABLE Study: A NHMRC Partnership Project

*'Improving patient outcomes and reducing the hidden burden of chronic wounds:
a digitally enabled Wound Model of Care'*

Alex's Story



Alex, a 48-year-old journalist from Sydney, a mother of 3 children. Alex had a split skin graft for a melanoma in February 2023. Her wound broke down, was infected and despite follow up appointments with the melanoma clinic, plastic surgeon, ED admission, and GP visits, her wound deteriorated and became chronic until she was referred to the Wound Care Command Centre in April 2023.

Timeline of Alex's journey

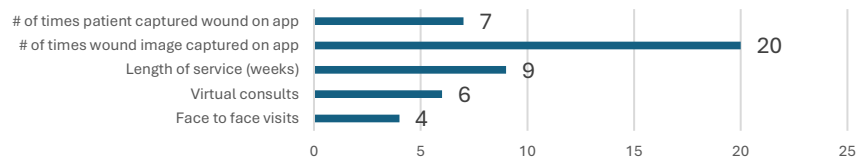
Before Alex was referred to the Wound Care Command Centre, she experienced inconsistent care, delayed treatment, poor coordination between disciplines and variability in care.



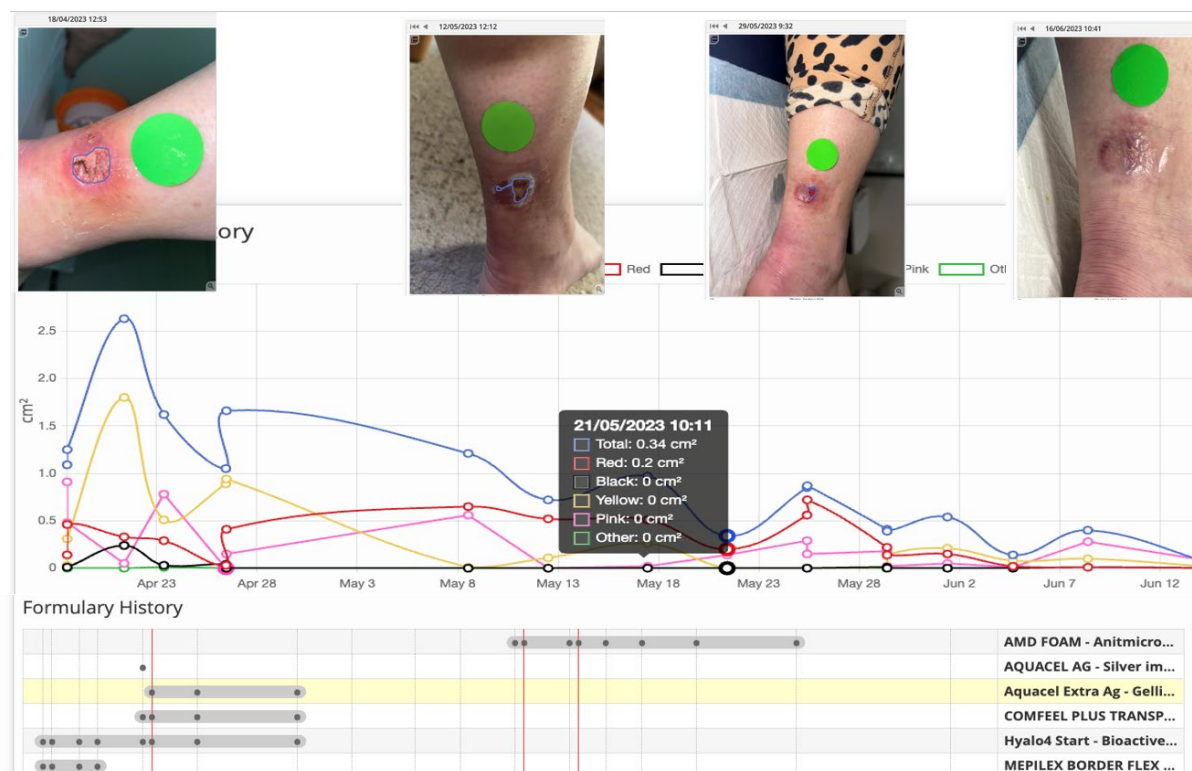
Alex and the specialist wound service

Alex had minimal face to face visits (four) with the specialist wound service and instead had virtual consults (six) and her wound was monitored via the digital wound platform (20 images over 9 weeks).

Alex and the Wound Care Command Centre



Alex's wound healing over time and monitoring via digital wound platform



After 9 weeks of care under the specialist wound service, Alex was discharged on 29 June 2023 with the wound fully healed.